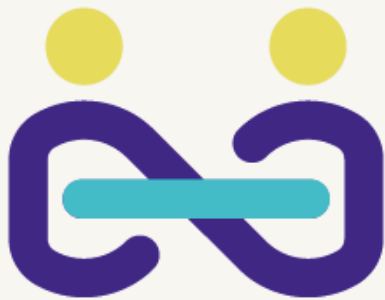


ERGOHUMAN

LUXURY | ELITE | CLASSIC



We are
Ergonomic



ERGOHUMAN CONTENTS

ADVANCED ENGINEERING	5
FOCUS ON:	
ERGOHUMAN LUXURY	7
ERGOHUMAN ELITE	9
ERGOHUMAN CLASSIC	11
FUNCTIONS & FEATURES	12
MODELS & OPTIONS	14
UPHOLSTERY	16
TECHSPEC	18
DIMENSIONS	19





ERGOHUMAN ADVANCED ENGINEERING

Designed and manufactured in-house by Comfort, we control 100% of the design and manufacturing processes from concept to creation.

The Ergohuman range is a perfect fusion of art and science, featuring flex zones that ensure constant support of back and lumbar, adjustable arm rests for unparalleled support and a height-adjustable, pivoting headrest for full cranial support.

Ergohuman is ideal for those who are in an office chair for long periods of time and require intensive use seating. With advanced aesthetics, form and function, this ergonomic chair utilises a twin-pivot or synchro-tilt mechanism delivering ultimate adjustability for all users. The Ergohuman can be used as 24/7 seating and is certified to EU standard EN 5459.



ERGOHUMAN LUXURY



OVERVIEW:

The Ergohuman Plus Luxury model takes our top selling chair to new levels, with enhanced aluminium detailing, an independent forward seat tilt function and a deluxe five-star base. Ergohuman Plus Luxury is the ideal high-end executive office chair.

The ingeniously simple single lever control operates the three most frequently used chair functions from a single point of contact (seat height, seat depth and back tilt). Arms are cleverly integrated into the rear of the mechanism to allow closer-to-desk working.

The Ergohuman Luxury also boasts 98% recyclability, has Greenguard Gold Certification and meets EN 5459, EN 1335-2:2009 and EN 1335-3:2009.

Available in a choice of mesh, fabric or leather with polished aluminium frame and base.

FEATURES:

ALUMINIUM DETAILING

SINGLE LEVER CONTROL

TWIN PIVOT CONTROL MECHANISM

DUAL SPRING TECHNOLOGY

INDEPENDENT 5° FORWARD SEAT TILT

SEAT SLIDE

ENHANCED WATERFALL FRONT SEAT

SEAT PRESSURE REDUCTION INSETS

AUTOMATIC LUMBAR SUPPORT

LOCKING HEIGHT, ANGLE, WIDTH & DEPTH ARMREST ADJUSTMENTS

OPTIONAL HEADREST WITH HEIGHT AND ANGLE ADJUSTMENT

ALL PARTS OF THE CHAIR ARE REPLACEABLE AND KEPT IN STOCK FOR LONGER LIFE-CYCLE



Build your own unique Ergohuman Luxury chair using a combination of mesh, fabric and leather finishes at comfort.global/create



ERGOHUMAN ELITE



OVERVIEW:

The Ergohuman Elite boasts all the main features of the Luxury model but with reduced aluminium detailing and without the seat forward tilt to target a wider market.

The ingeniously simple single lever control operates the three most frequently used chair functions from a single point of contact (seat height, seat depth and back tilt). Arms are cleverly integrated into the rear of the mechanism to allow closer-to-desk working.

The Ergohuman Elite also boasts 98% recyclability, has Greenguard Gold Certification and meets EN 5459, EN 1335-2:2009 and EN 1335-3:2009.

Available in a choice of mesh, fabric or leather with polished aluminium frame and a choice of bases.

FEATURES:

SINGLE LEVER CONTROL

TWIN PIVOT CONTROL MECHANISM

DUAL SPRING TECHNOLOGY

SEAT SLIDE

ENHANCED WATERFALL FRONT SEAT

SEAT PRESSURE REDUCTION INSETS

AUTOMATIC LUMBAR SUPPORT

LOCKING HEIGHT, ANGLE, WIDTH & DEPTH ARMREST ADJUSTMENTS

OPTIONAL HEADREST WITH HEIGHT AND ANGLE ADJUSTMENT

OPTIONAL COAT-HANGER

ALL PARTS OF THE CHAIR ARE REPLACEABLE AND KEPT IN STOCK FOR LONGER LIFE-CYCLE



Build your own unique Ergohuman Elite chair using a combination of mesh, fabric and leather finishes at comfort.global/create



ERGOHUMAN CLASSIC



OVERVIEW:

Our most popular European model – the Ergohuman Classic – features more slimline aluminium detailing to enhance its value in the marketplace.

The ingeniously simple single lever control operates the three most frequently used chair functions from a single point of contact (seat height, seat depth and back tilt).

The Ergohuman also boasts 97% recyclability, has Greenguard Gold Certification and meets EN 5459, EN 1335-2:2009 and EN 1335-3:2009.

Available in a choice of mesh, fabric or leather with polished aluminium frame and base.

FEATURES:

SINGLE LEVER ADJUSTMENT

TENSION CONTROL

TILT LOCK

AUTOMATIC LUMBAR SUPPORT

SYNCHRO-TILT MECHANISM

SEAT HEIGHT ADJUSTMENT

WATERFALL SEAT

BACK HEIGHT ADJUSTMENT

SEAT DEPTH ADJUSTMENT

ARM HEIGHT, DEPTH & SWIVEL ADJUSTMENT

OPTIONAL HEADREST WITH HEIGHT AND ANGLE ADJUSTMENT

OPTIONAL COAT-HANGER

ALL PARTS OF THE CHAIR ARE REPLACEABLE AND KEPT IN STOCK FOR LONGER LIFE-CYCLE



Build your own unique Ergohuman Classic chair using a combination of mesh, fabric and leather finishes at [comfort.global/create](https://www.comfort.global/create)

ERGOHUMAN

SEATING

INNOVATION

FEATURES

For a full technical specification, please see page 18-19

OPTIONAL HEADREST

The headrest can be tilted and height-adjusted to suit the user's individual requirements.

BACK HEIGHT

Raise or lower the chair's back to support the user's back and lumbar region.

LUMBAR SUPPORT

The Ergohuman boasts a patented lumbar system which, unlike traditional chairs, delivers comprehensive lumbar coverage and unrivalled support in every recline position. This promotes a more natural pelvic alignment and helps reduce musculoskeletal complications. A pre-tensioned metal connector provides automatic resistance to the user's lower back which varies with seating positions.

SEAT HEIGHT

Raise or lower the chair's seat height to fit the individual user's anthropometric measurements.

SINGLE LEVER MECHANISM (Luxury & Elite)

Ingenuously simple single lever control to operate the seat height, seat depth, seat tilt* and back tilt functions.

TENSION CONTROL (Luxury & Elite)

Adjusts back tension to allow the back to tilt comfortably supporting the user's body weight when reclining.

TWIN-PIVOT MECHANISM (Luxury & Elite)

This patented dual pivot technology offers more movement and constant support with minimal pressure on the underside of the thighs (first pivot point behind the user's knees and the second point under the ischial tuberosities). This encourages continuous supported body movement, therefore increasing blood circulation and reducing fatigue. An additional lock allows the user to recline in a range of positions.

Dual spring engineering helps the user to find the perfect resistance for their weight, and delivers a smooth and comfortable recline action.

POLISHED BASE

A choice of two polished aluminium five-star bases with 60 or 65 mm nylon castors.

ARMRESTS (Classic)

Height (10 point), depth and angle adjustment.

MECHANISM (Classic)

Single lever control allows back to recline to a 2:1 back-to-seat ratio for personalised comfort and support.

TENSION CONTROL (Classic)

Adjusts tension of the mechanism to support the user's weight when in dynamic mode.



ARMRESTS (Luxury & Elite)

Height (8 position lock), width, angle and depth adjustable to allow forearms to rest comfortably whilst taking the weight off your shoulders.

SEAT SLIDE & TILT* (*Tilt on Luxury only)

This feature allows depth adjustment of the seat to accommodate the length of the user's legs and on the Luxury (EHPL) model, provides up to 5° independent forward tilt.

WATERFALL FRONT / SEAT PRESSURE REDUCTION (Luxury & Elite)

The rounded front seat is designed to reduce pressure points on the underside of user's thighs. In addition, foam panels surround both front and sides of the seat for greater pressure distribution.



ERGOHUMAN MODELS & OPTIONS

The Ergohuman is designed for both aesthetic impact and ergonomic excellence. An extensive selection of soft and durable mesh, leather and fabric upholstery offers a variety of colour combinations to suit any environment. This stylish chair delivers outstanding ergonomic comfort and stylish innovation – the perfect example of form and function in complete harmony.

For complementary visitor seating, see Comfort Europe's Lii visitor chair.

MODELS



LUXURY



ELITE



CLASSIC

INTERCHANGEABLE BASE OPTIONS



DELUXE



STANDARD

UPHOLSTERY OPTIONS



HEADREST
BACK
SEAT

MESH
MESH
MESH

LEATHER
LEATHER
LEATHER

FABRIC
FABRIC
FABRIC

MESH
MESH
LEATHER

MESH
MESH
FABRIC



BACK
SEAT

MESH
MESH

LEATHER
LEATHER

FABRIC
FABRIC

MESH
LEATHER

MESH
FABRIC

Other combinations are available.

Build and download your own design using our chair configurator at www.comfort.global/create

ADDITIONAL OPTIONS



COAT-HANGER* / BLACK GLIDES

*COAT-HANGER CURRENTLY NOT AVAILABLE ON LUXURY MODEL



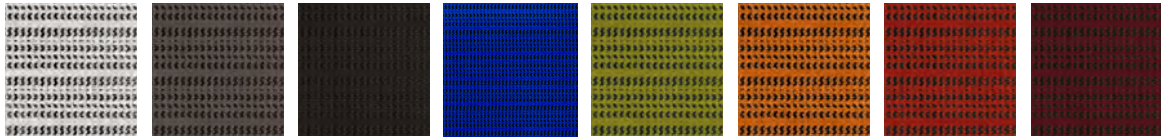
NOTEBOOK STAND / LEGREST** / POLISHED GLIDES**

**NOTEBOOK & LEGREST NOT AVAILABLE ON CLASSIC MODEL

ERGOHUMAN UPHOLSTERY

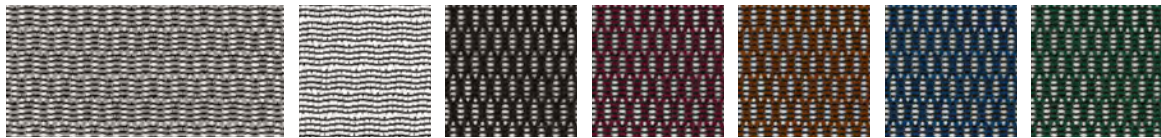
Comfort are passionate about using mesh on our chairs due to their durability and ergonomic properties. In addition, we have selected a range of complementary leathers and fabrics to mix-and-match. Should you wish to upholster in an alternative material, we work with all the leading contract fabric suppliers and can advise on suitability – non stock items will increase lead times.

KMD MESH



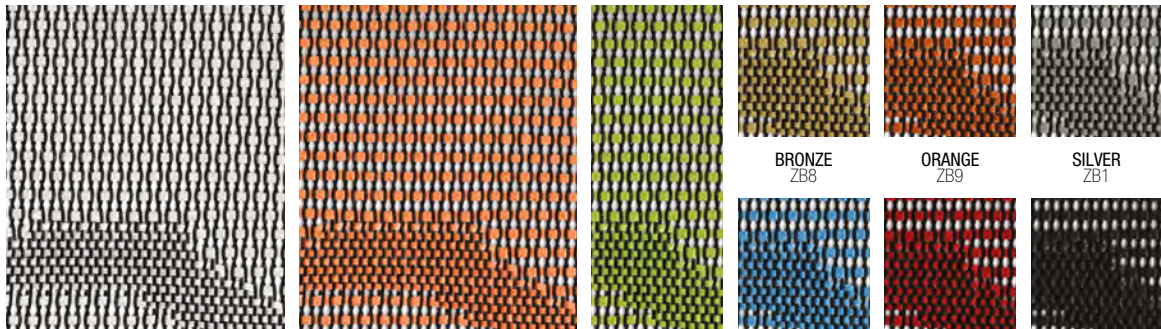
WHITE KMD36 GREY KMD30 BLACK KMD31 BLUE KMD35 GREEN KMD34 ORANGE KMD33 RED KMD32 BURGUNDY KMD37

W MESH



SILVER W09-53 WHITE W09-24 BLACK W09-01 GRAPE W09-10 CHESTNUT W09-51 BLUE W09-18 FOREST GREEN W09-19

ZB MESH



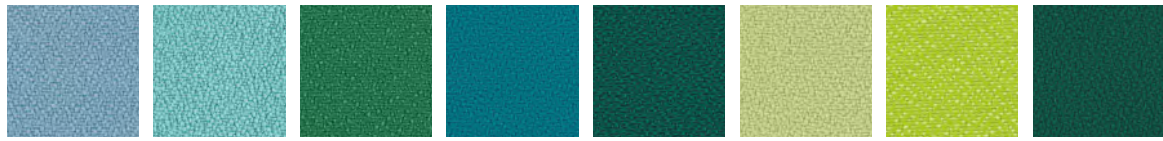
WHITE ZB7 TANGERINE ZB4 HERBAL GREEN ZB3 SKY BLUE ZB5 RED ZB6 BLACK ZB2 BRONZE ZB8 ORANGE ZB9 SILVER ZB1

LEATHER



LIGHT TAN LE3902 LATTE LE7810 DARK BROWN LE8213 RED LE3310 ORANGE LEH007 BLACK LE2095 SNOW LEA2 HUNTER GREEN LE197 TEAL LE196 HEATHER LE1118 DARK BLUE LE70091

CAMIRA XTREME



ORCHILLA
YS167

CAMPECHE
YS074

LOMBOK
YS159

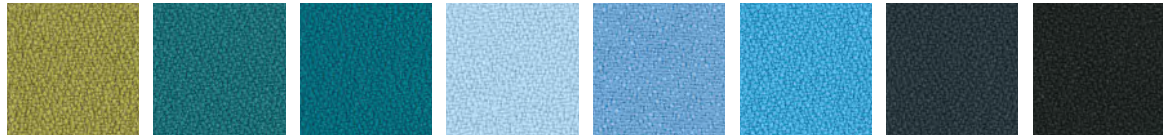
TONGA
YS160

FLORES
YS161

APPLE
YS096

MADURA
YS156

TABOO
YS045



APPLEDORE
YS077

WINDJAMMER
YS047

MONTSERRAT
YS011

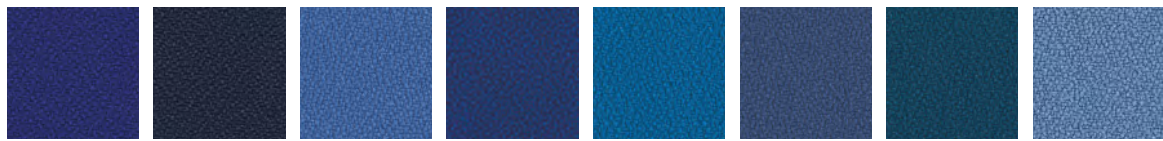
ARECIBO
YS174

MARIANNA
YS157

PARASOL
YS073

ARAWAK
YS016

HAVANA
YS009



NAVASSA
YS162

LEEWARD
YS164

BLUEFIELD
YS021

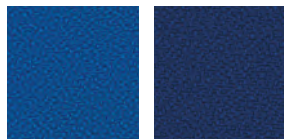
OCEAN
YS100

SCUBA
YS082

CAYMAN
YS024

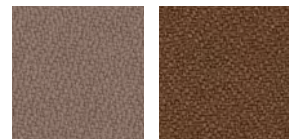
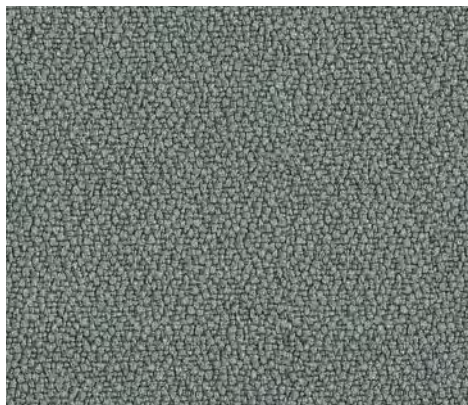
COSTA
YS026

MARTINIQUE
YS004



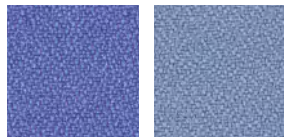
HONEYMOON
YS035

CURACAO
YS005



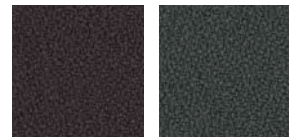
NOUGAT
YS091

NICOBAR
YS158



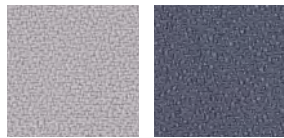
BLUEBELL
YS097

ANGUILLA
YS169



BOUNTY
YS086

SOMBREIRO
YS046

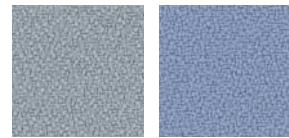


SLIP
YS094

OSUMI
YS171

XTREME IS A CREPE WEAVE FABRIC
MADE FROM 100% RECYCLED MATERIAL.
(BLIZZARD - YS081 SHOWN)

PLEASE CONTACT CAMIRA FOR SWATCH OR SAMPLES.



BURU
YS170

STEEL
YS095



BONAIRE
YS172

KRABI
YS141

BLIZZARD
YS081

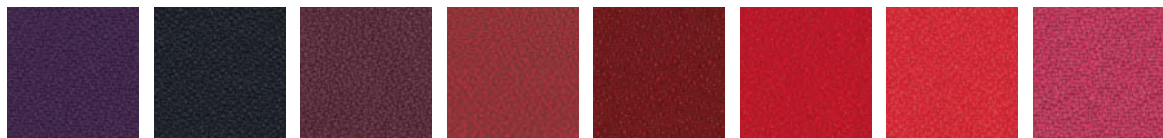
RUM
YS173

PADANG
YS145

TWISTER
YS083

BRIDGETOWN
YS102

MAUVE
YS069



TAROT
YS084

ANDAMAN
YS144

TOBAGO
YS030

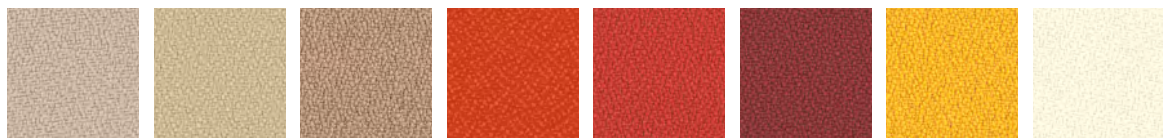
CALYPSO
YS106

TOKARA
YS136

PANAMA
YS079

BELIZE
YS105

DIABLO
YS101



ARUBA
YS108

MANADO
YS166

SANDSTORM
YS071

TORTUGA
YS168

LOBSTER
YS076

JAMAICA
YS027

SOLANO
YS072

ADOBO
YS165

ERGOHUMAN TECHSPEC

	LUXURY	ELITE	CLASSIC
GREEN CREDENTIALS			
GREENGUARD CERTIFICATION GREENGUARD Certification standards have established performance-based standards to define products and processes with low chemical and particle emissions for use indoors.	GOLD	GOLD	GOLD
RECYCLABILITY	98%	98%	97%
MATERIAL ANALYSIS	CONTENT RECYCLED	CONTENT RECYCLED	CONTENT RECYCLED
PLASTIC	31.3% 90%	31.3% 90%	42% 90%
ALUMINIUM ALLOY	60.1% 10%	60.1% 10%	35% 10%
STEEL	5% 80%	5% 80%	19% 80%
UPHOLSTERY	0.9% -	0.9% -	1% -
PU / FOAM	2.7% -	2.7% -	4% -
RECYCLED MATERIAL TOTAL	38%	38%	57%

CERTIFICATION

EN 1335			
-2:2009	YES	YES	YES
-3:2009	YES	YES	YES
Office furniture. Office work chair. Safety requirements.			
EN 5459-2:2008	YES	YES	YES
Specification for performance requirements and tests for office furniture. Office pedestal seating for use by persons weighing up to 150kg and for use up to 24 hours a day, including type-approval tests for individual components.			



ERGOHUMAN DIMENSIONS

ERGOHUMAN PLUS LUXURY / ELITE DIMENSIONS

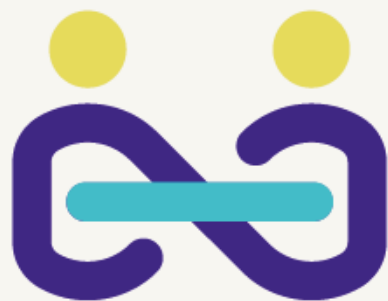


	mm
A	440 - 490
B	400 - 500
C	450 - 485
D	560 - 630
E	500
F	175 - 220
G	650

ERGOHUMAN CLASSIC DIMENSIONS



	mm
A	440 - 490
B	390 - 480
C	480
D	570 - 630
E	520
F	175 - 220
G	645



We are
Ergonomic

weareergonomic.co.uk

Tel: 0800 118 2421